

PARTS LIST

VANTRAX® HKANT 40K/
HKA180

LIT NO: L649

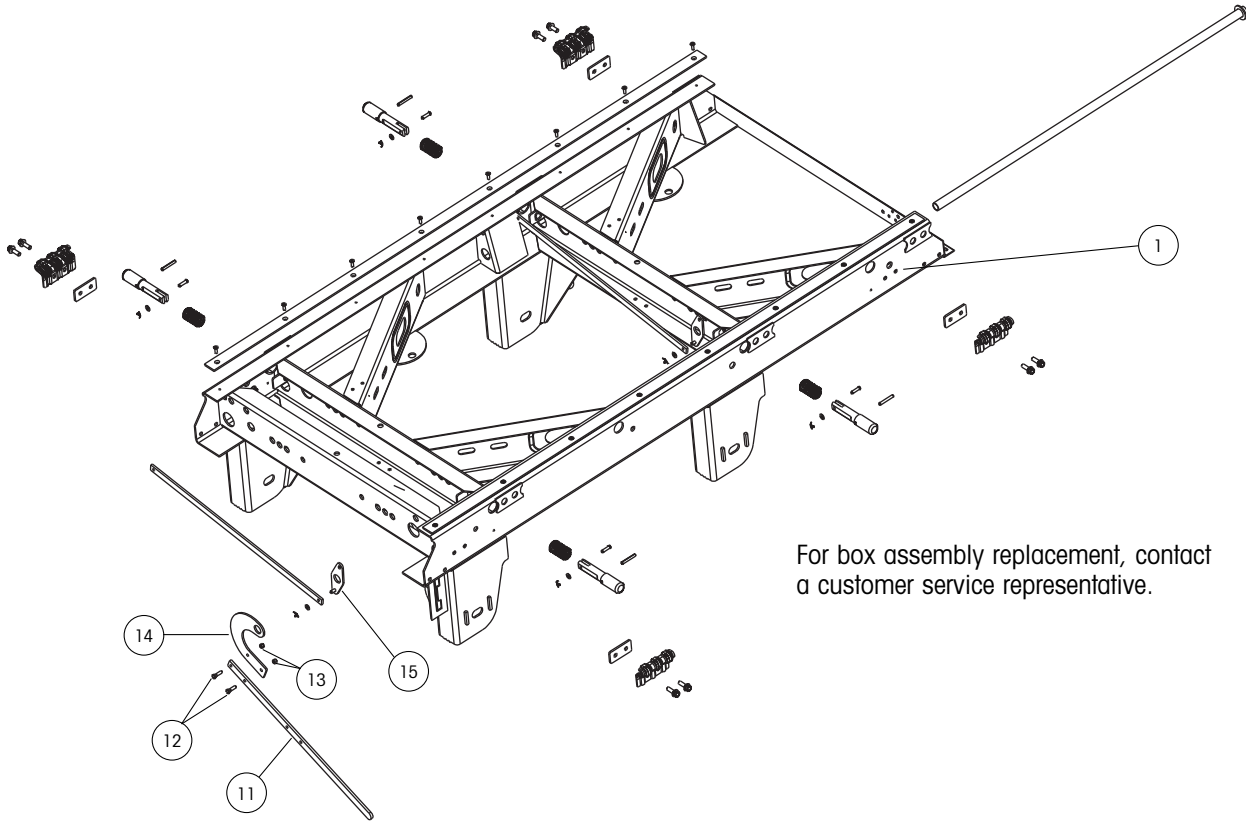
DATE: December 2008

REVISION: B



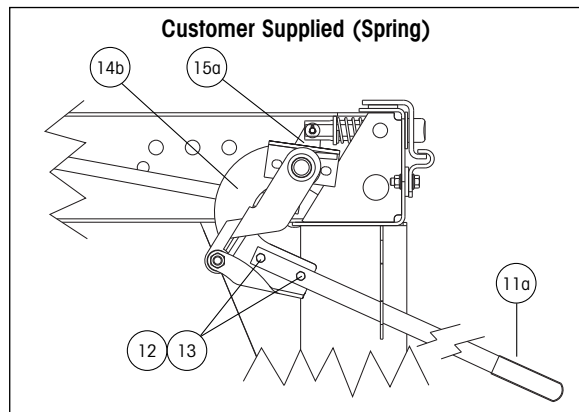
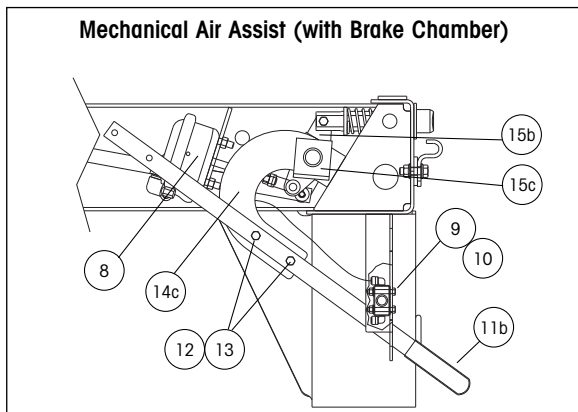
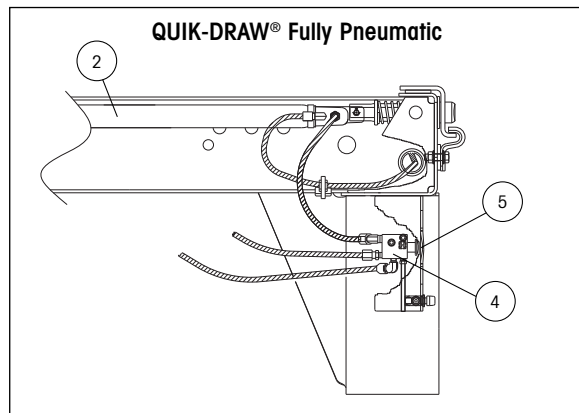
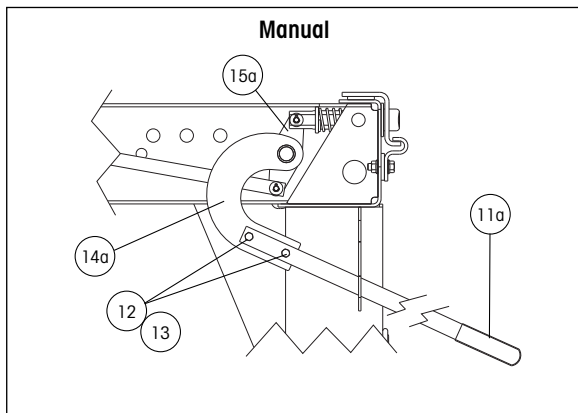


SLIDER BOX ASSEMBLY



For box assembly replacement, contact a customer service representative.

RELEASE MECHANISMS



**SLIDER BOX ASSEMBLY**

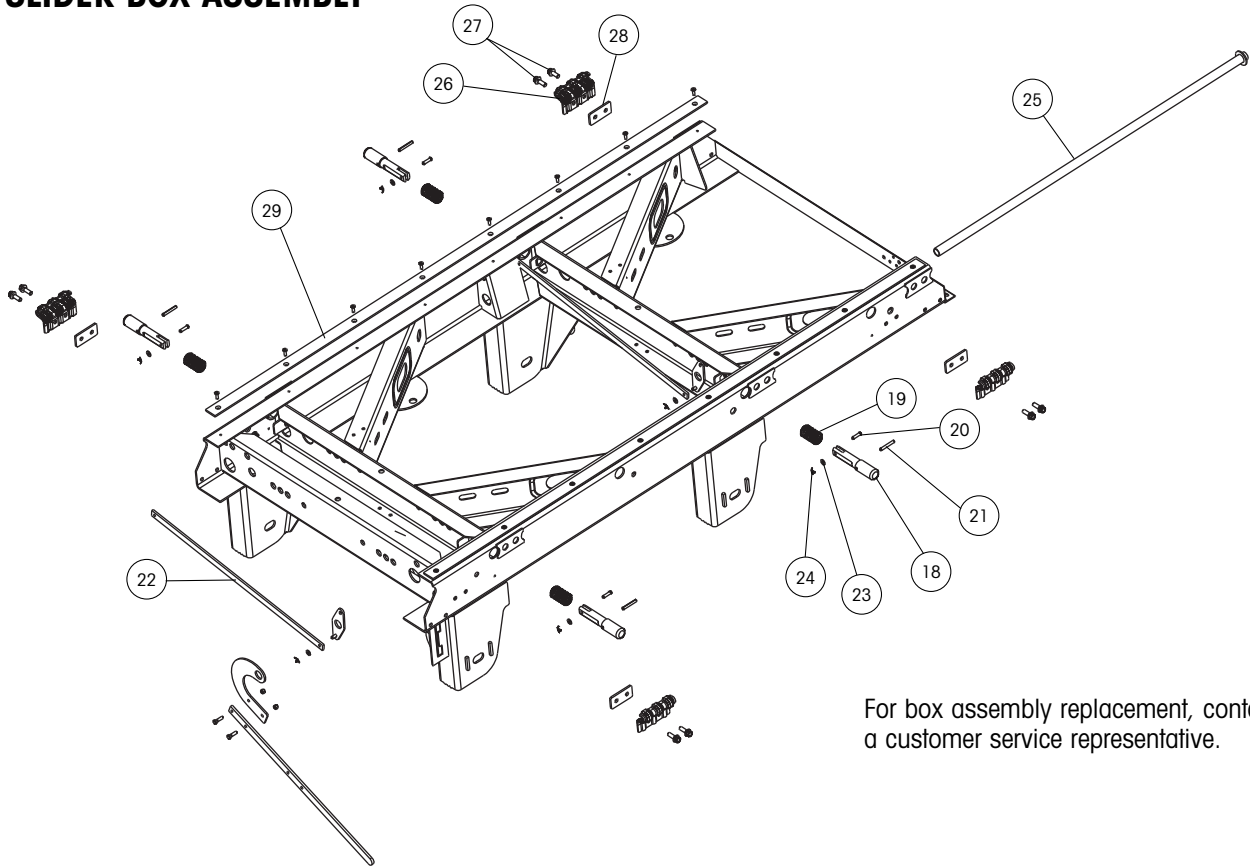
ITEM	DESCRIPTION	PART NO.	SYSTEM QTY.	NOTE
1	AFTERMARKET SLIDER BOX REPLACEMENT	AMBOX.###	1	Contact Hendrickson for assistance
2	QUIK-DRAW® PNEUMATIC PIN-PULL MECHANISM			
	2a Front Linear Actuator with Fittings, 42" box	S-28061-1	1	
	2b Rear Linear Actuator with Fittings, 42" box	S-28062-1	1	
	2c Front Linear Actuator with Fittings, 48" and 54" box	S-28061-2	1	Also order Pin Extension for 54" box
	2d Rear Linear Actuator with Fittings, 48" and 54" box	S-28062-2	1	Also order Pin Extension for 54" box
3	PIN EXTENSION 54" BOX WIDTH (Not Shown)	S-27836	4	54" box is used with wide base tires
4	QUIK-DRAW VALVE			
	4a Three-way Auto Reset Valve	VS-25223	1	
	4b Three-way Auto Reset Valve Assembly with Fittings	VS-25224	1	
5	QUIK-DRAW VALVE KNOB with SET SCREW	VS-25849	1	
6	QUIK-DRAW VALVE SPACER (Not Shown)	B-25284	1	
7	QUIK-DRAW RETROFIT KIT (Not Shown)			
	7a 42" box width	D-25430-2	1	Includes actuators, valve, plumbing hardware and instructions
	7b 48" box width	D-25430-8	1	Same as above
	7c 54" box width	D-25430-4	1	
8	BRAKE CHAMBER MECHANICAL AIR ASSIST	A-23039	1	Type 12 modified
9	AIR VALVE MECHANICAL AIR ASSIST	VS-23224	1	Air valve with fittings
10	VALVE CAP	A-22977	1	
11	HANDLE ASSEMBLY			
	11a Manual and Customer Supplied	S-25592	1	Handle and grip assembly
	11b Mechanical Air Assist	B-22923	1	Handle only
12	HANDLE BOLT	SA-1100-10	2	2-3/8"-16 x 1-1/4" hex head bolt Grade 5
13	HANDLE NUT	SA-9000-5	2	2-3/8"-16 Lock nut, Grade B
14	HANDLE MOUNT			
	14a Manual	C-23232	1	
	14b Customer Supplied	C-23530	1	
	14c Mechanical Air Assist	C-23231	1	
15	CRANK ARM WELDMENT			
	15a Manual and Customer Supplied	B-23149	2	For front and rear of slider box
	15b Mechanical Air Assist	B-23149	1	For rear of slider box
	15c Mechanical Air Assist	B-22659	1	For front of slider box
16	CRANK ARM PLATE; MECHANICAL AIR ASSIST (Not Shown)	B-23025	1	
17	CRANK ARM BOLT KIT (Not Shown)		1	Includes bolt, flat washer, lock washer and nut

NOTE: RH = Ride Height

Note: Identification can be found on the roadside slider box rail above the front frame bracket there will also be a blank VANTRAAX tag on the inside of the curbside beam

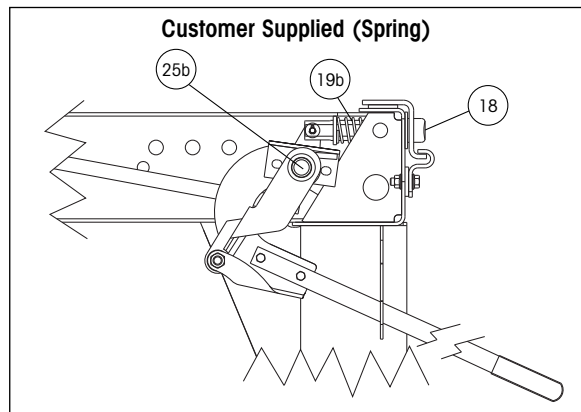
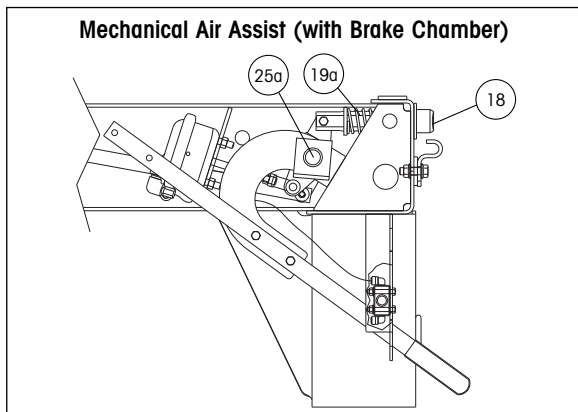
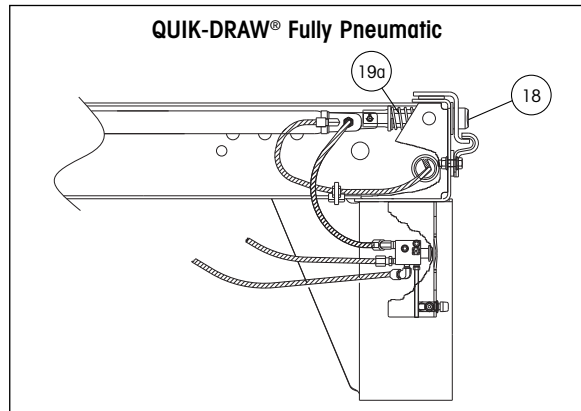
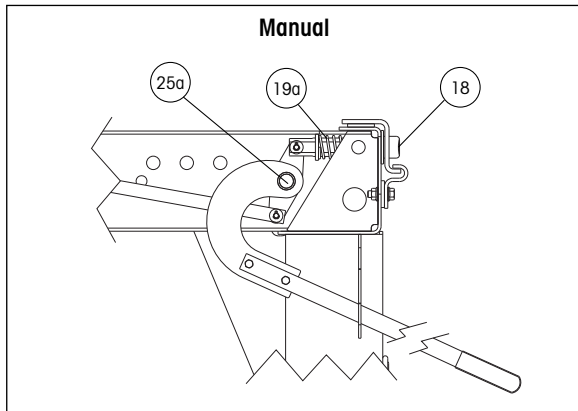


SLIDER BOX ASSEMBLY



For box assembly replacement, contact a customer service representative.

RELEASE MECHANISMS





VANTRAA[®] HKANT 40K / HKA180 PARTS LIST

ITEM	DESCRIPTION	PART NO.	SYSTEM QTY.	NOTE
18	LOCKING PIN			
	18a 1.375" diameter pin	S-28290	4	4" body rail hole spacing (TTMA)
	18b 1.375" diameter pin	S-28290	4	6" body rail hole spacing
	18c 1.625" diameter pin	S-28289	4	4" body rail hole spacing
19	LOCKING PIN SPRING			
	19a 42" box width with Manual and Mechanical Air Assist 48" box width with Manual, QUIK-DRAW [®] and Mechanical Air Assist	B-28930	4	3.25" spring
	19b 42" box width with QUIK-DRAW 42" and 48" box width with Customer Supplied Spring Mechanism	B-22000	4	3.8" spring
20	CLEVIS PIN	SA-5200-6	4	3/8" x 1-3/8"
21	SPRING PIN	SA-8100-4	4	3/8" x 2-1/2" roll pin
22	LOCKING PIN LINK			
	22a 42" box width	S-23150-1	2	
	22b 48" box width	S-23150-2	2	
	22c 54" box width	S-23150-3	2	
23	LOCKING PIN WASHER	SA-1500-2	6	3/8" I.D. flat washer
24	LOCKING PIN LINK COTTER PIN	SA-1700-12	6	3/32" x 1" cotter pin
25	PIPE WELDMENT			
	25a Manual and Mechanical Air Assist	S-21433	1	
	25b Customer Supplied	S-21433-1	1	
26	BODY RAIL CLIP			
	26a 3.4" clip height	S-24459	4	Use with 4" hole centers and 1.625" locking pin
	26b 3.8" clip height	S-24460	4	Use with 6" hole centers and 1.375" locking pin
27	BODY RAIL BOLT	SA-6900-2	8	1/2"-13" x 1-1/2" flanged bolt
28	BODY RAIL CLIP SPACER			
	28a 1.5" clip hole centers	A-21282	4	
	28b 2" clip hole centers	A-22367	4	
29	SLIDER WEAR PAD KIT	S-14342-3	2	Includes (1) slider wear pad and (8) screws



SUSPENSION ASSEMBLIES

Frame Bracket Assembly

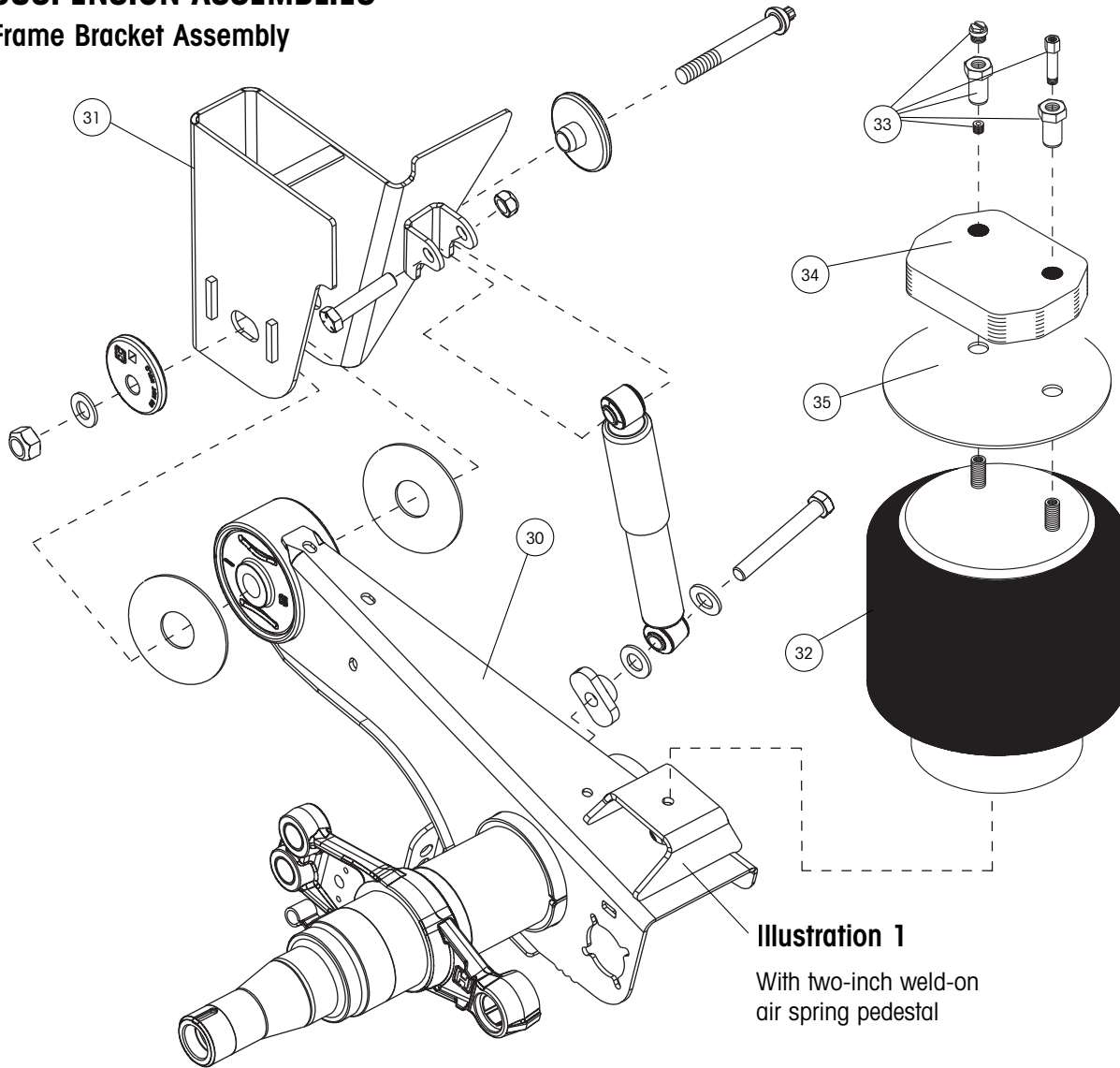


Illustration 1

With two-inch weld-on
air spring pedestal

**Manufactured Late
August 2002 and After**

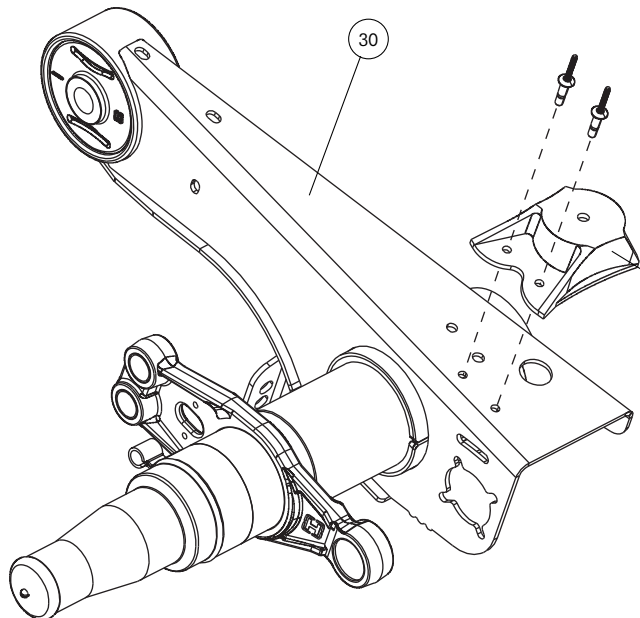


Illustration 2

With cast, bolt-on
air spring pedestal

**SUSPENSION ASSEMBLIES**

ITEM	DESCRIPTION	PART NO.	SYSTEM QTY.	NOTE
30	HALF-TRAAX AXLE/BEAM WELDMENT	HTRAAX.###	2	Contact Hendrickson for assistance
31	FRAME BRACKET ASSEMBLY - NARROW BEAM			
	31a Roadside	S-22365-1	2	14"-15" Ride Heights
	Curbside	S-22365-2	2	
	31b Roadside	S-29802-1L	2	15.5"-17" Ride Heights
	Curbside	S-29802-1R	2	
	31c Roadside	S-22997-1	2	18"-19" Ride Heights
	Curbside	S-22997-2	2	
32	AIR SPRING			
	32a (Shipped prior to January 2008)	S-22948	4	Replaces C-22948 and C-21966 16" Ride Height and above
	32b (Shipped after January 2008)	S-28929	4	
33	AIR SPRING MOUNTING KIT (per air spring)			
	33a WITH 2" WELD-ON AIR SPRING PEDESTAL - When model includes a 2" weld-on pedestal under the air spring. (Illustration 1)			
		S-22635/2	4	14" and 18" Ride Heights
		S-22631/2	4	15" and 19" Ride Heights
		S-22632/2	4	15.5" Ride Height
		S-22619/2	4	16", 16.5" and 17" Ride Heights
	33b WITH CAST AIR SPRING PEDESTAL - When model includes a cast, bolt-on pedestal under the air spring. (Illustration 2)			
		S-22619/2	4	14"-18" Ride Heights
		S-22630/2	4	19" Ride Height
34	AIR SPRING SPACER			
	34a WITH 2" WELD-ON AIR SPRING PEDESTAL - When model includes a 2" weld-on pedestal under the air spring. (Illustration 1)			
		B-22510-4	4	14" and 16.5" Ride Heights 3/4" thick spacer
		B-22510-2	4	15.5" Ride Height
		B-22510-4	4	Requires both the 3/4" and 1-7/8" spacer
		B-22510-2	4	15" and 18" Ride Heights 1-7/8" thick spacer
		B-22510-1	4	17" Ride Height 1-1/8" thick spacer
		B-22510-3	4	19" Ride Height 3-1/8" thick spacer
	34b WITH CAST AIR SPRING PEDESTAL - When model includes a cast, bolt-on pedestal under the air spring. (Illustration 2)			
		B-22510-1	4	19" Ride Height 1-1/8" thick spacer
35	AIR SPRING MOUNTING PLATE	S-27042	4	15.5" Ride Height

Note: Identification can be found on the roadside slider box rail above the front frame bracket there will also be a blank VANTRAAX tag on the inside of the curbside beam



SUSPENSION ASSEMBLIES

Frame Bracket Assembly

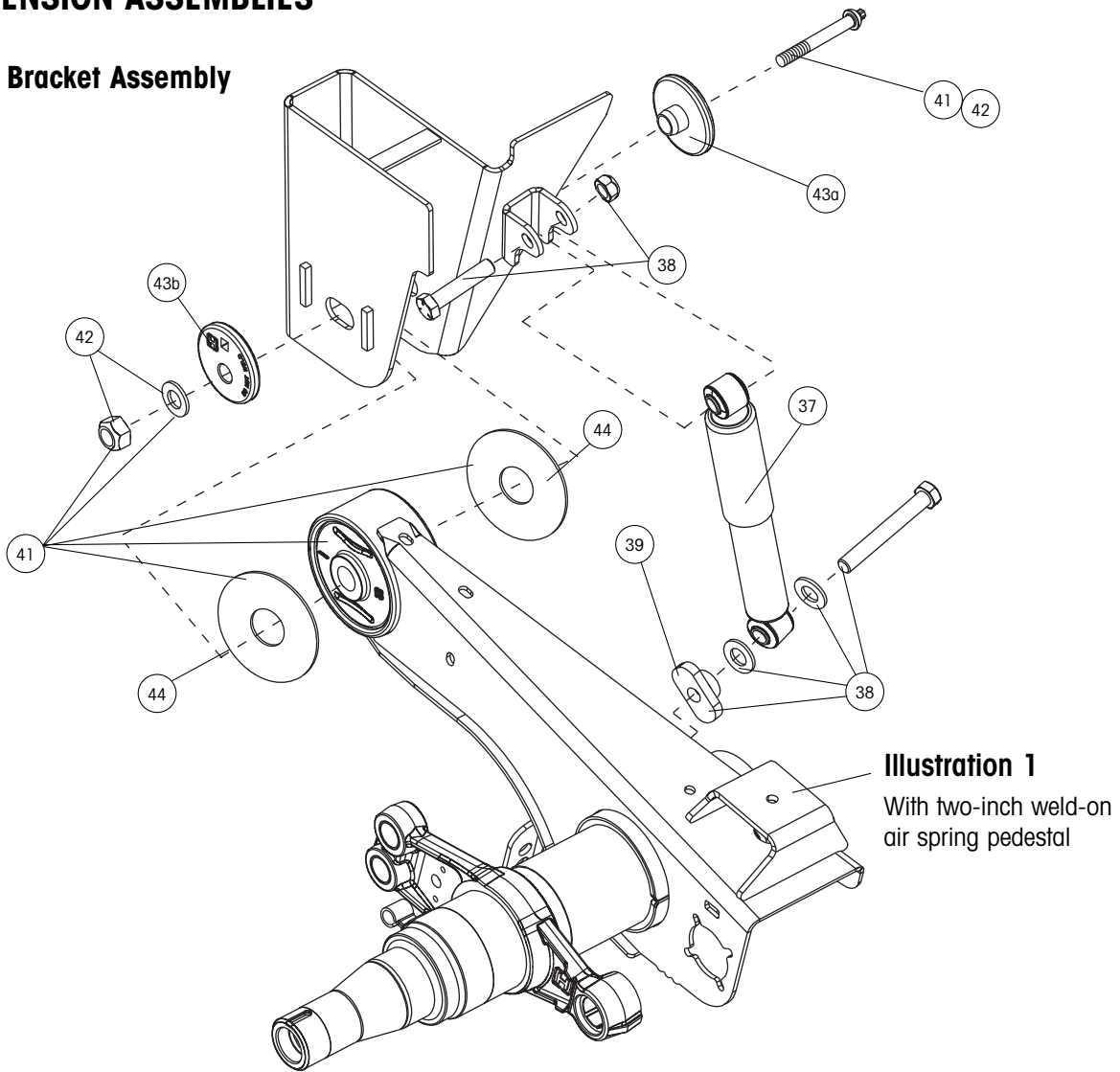


Illustration 1
With two-inch weld-on
air spring pedestal

**Manufactured Late
August 2002 and After**

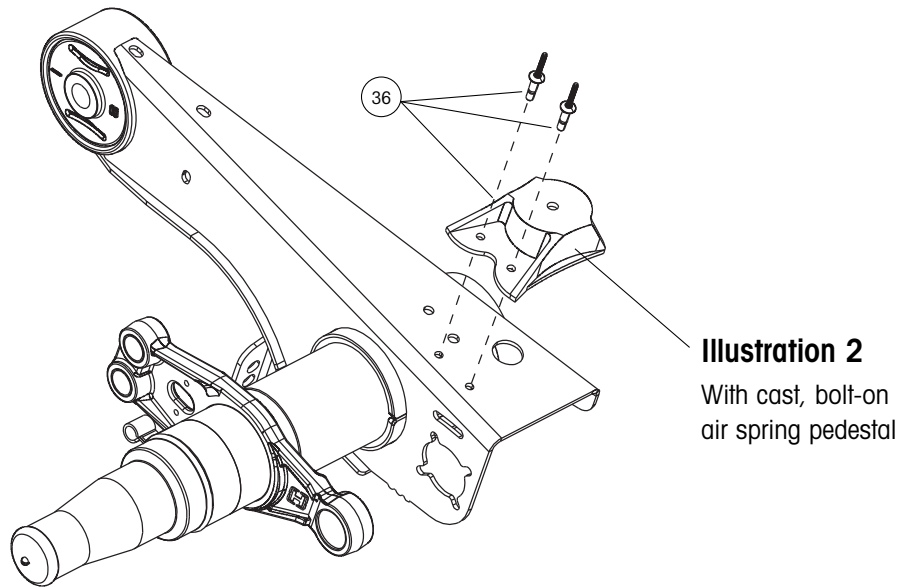


Illustration 2
With cast, bolt-on
air spring pedestal

**SUSPENSION ASSEMBLIES**

ITEM	DESCRIPTION	PART NO.	SYSTEM QTY.	NOTE
36	CAST AIR SPRING PEDESTAL KIT - When model includes a cast, bolt-on pedestal under the air spring. (Illustration 2)			Includes left and right side pedestals and fasteners
		S-27447-1	2	16" Ride Height with 2" Pedestal
		S-27447-2	2	16.5" Ride Height with 2.57" Pedestal
		S-27447-3	2	14" and 17" Ride Heights with 3.17" Pedestal
		S-27447-4	2	15", 15.5", 18" and 19" Ride Heights with 3.91" Pedestal
37	SHOCK ABSORBER	S-24088	4	
38	SHOCK BOLT KIT	S-24049/2	4	Includes shear bolt, spacer, washers, hex bolt and hex nut
39	SHOCK SPACER	S-27196	4	
40	SHOCK STRAP KIT (Not Shown)	C-23086-1	4	Includes strap, clevis and ties
41	TRI-FUNCTIONAL® PIVOT BUSHING KIT¹	S-26321	2	Includes (2) bushings, (2) pivot bolt kits, (4) bushing tube spacers and lubricant pack
42	QUIK-ALIGN® PIVOT BOLT KIT	S-24705	4	Contains 7" bolt, nut and hardened washers
43	QUIK-ALIGN ALIGNMENT COLLARS			
	43a Concentric (inner)	S-20924	4	Pivot bolt hole is centered
	43b Eccentric (outer)	S-20925	4	Pivot bolt hole is offset from center
44	BUSHING TUBE SPACER			
	44a Units shipped before Aug. 1, 2002	B-11613	8	Inner metal outer diameter dimension of TRI-FUNCTIONAL® Bushing is 2.2"; Inner hole dimension of BTS 2.38"
	44b Units shipped after Aug. 1, 2002	S-26807	8	Inner metal outer diameter dimension of TRI-FUNCTIONAL Bushing is 2.6"; Inner hole dimension of BTS 2.95"
45	UNIVERSAL NON-DELAY HEIGHT CONTROL VALVE (Not Shown)	VS-227	1	All applications

¹Bushing tool S-24736 is required to correctly rebush the suspension

Note: Identification can be found on the roadside slider box rail above the front frame bracket there will also be a blank VANTRAAX tag on the inside of the curbside beam

www.hendrickson-intl.com



Trailer Suspension Systems
250 Chrysler Drive, Unit #3
Brampton, ON Canada L6S 6B6
905.789.1030
Fax 905.789.1033

Trailer Suspension Systems 866.RIDEAIR (743.3247)
2070 Industrial Place SE 330.489.0045
Canton, OH 44707-2641 USA Fax 800.696.4416

Hendrickson Mexicana
Av. Industria Automotriz #200
Parque Industrial Sliva Aeropuerto
Apodaca, N.L., México C.P. 66600
+52 (81) 8288.1300
Fax +52 (81) 8288.1301